

Mechanical characteristics: 機械的性能:

Total rotational angle 總旋轉角度	$280^{\circ} \pm 5^{\circ}$
Rotational torque 旋轉力矩	1 ~ 8mN.m (10 ~ 80gf.cm)
Rotation stopper strength 止擋強度	0.3N.m(3kgf.cm)
Push pull strength 軸推拉強度	50N(5kgf.cm)
Shaft lever wobble 軸搖晃	0.8*L/20mmp-p MAX.

Electrical characteristics:電氣的性能:

Total resistance 總阻值	1K Ω -1M Ω
Total resistance tolerance 總阻偏差	$\pm 20\%$ more than 1M Ω $\pm 30\%$
Rated power 額定功率	0.05W
Max. operating voltage 最高使用電壓	50V AC/20V DC
Resistance taper 阻值規律	A , B , C
Residual resistance 殘留阻值	$R \geq 250K \Omega$ 0.1% max. of total resistance $10K \Omega < R < 250K \Omega$ 20 Ω max. $R \leq 10k \Omega$ 10 Ω max.
Slide noise 滑動噪音	less than 100m V
Insulation resistance 絕緣電阻	more than 100M Ω at DC 250V
Withstand voltage 耐電壓	for 1 minute or more at AC 250V

Durability:耐久的性能:

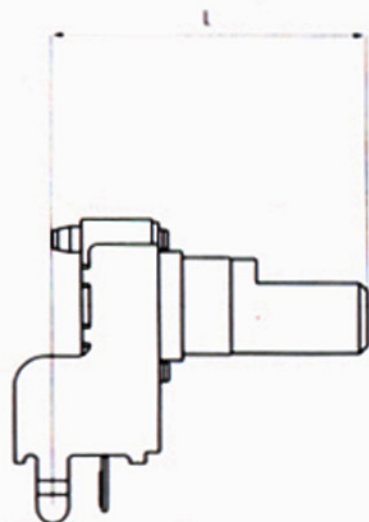
Rotational life 旋轉壽命	5,000 cycles
-------------------------	--------------

Durability:耐久的性能:

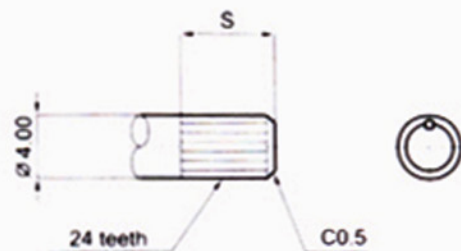
Rotational life 旋轉壽命	5,000 cycles
-------------------------	--------------

Type of shaft: 軸的型式 :

Horizontal

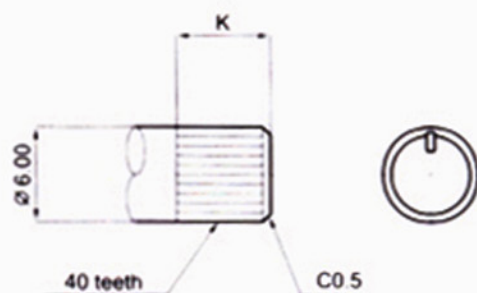


S TYPE:



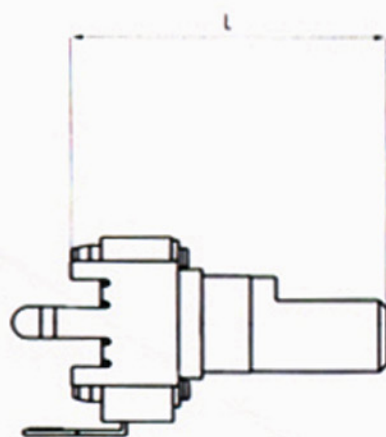
X	K	L	M	N	O
L	15	20	25	30	35
S	7	7	7	7	7

K TYPE:

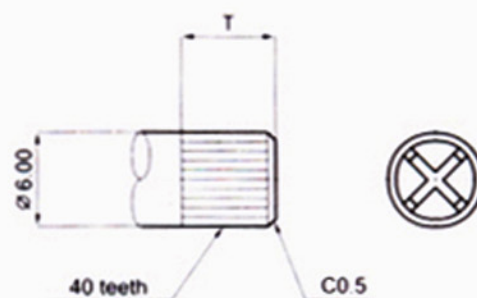


X	Q	R	S	T	U
L	15	20	25	30	35
K	6	7	7	7	7

Vertical

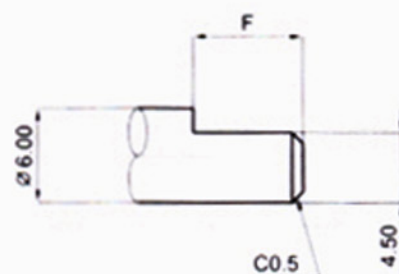


T TYPE:



X	H	I	J		
L	9.5	15	20		
T	-	6	7		

F TYPE:



X	A	B	C	D
L	15	20	25	30
F	6	7	12	12